

INFORMATION N° 42

Pumps blocked by fuel oil

SUNTEC draws the attention of its customers to the fact that fuel oils and biofuel blends are sensitive to air and moisture (in particular B10, a low sulfur fuel oil mixed with 10% FAME or EMAG). They can deteriorate over time, depending on the storage conditions: esterified oils act as solvents and may thus entrain deposits and residues of the tank or the pipes, which will end up in the pump. Some mechanical components may get stuck and the warranty of our products would not apply.

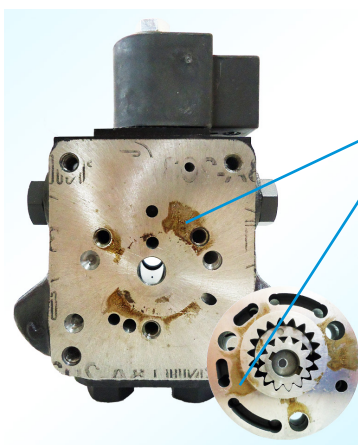
Blockages can also be caused by sticky or gummy deposits, which form when the fuel oil does not contain additives that preserve it from oxidation or corrosion.

Here are some examples observed on our pumps:



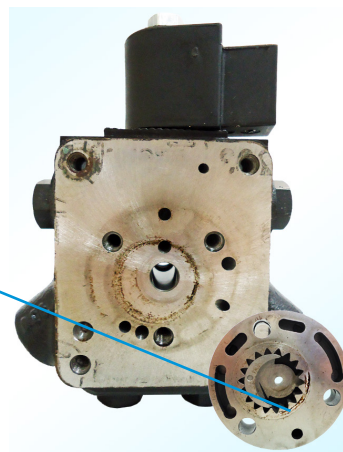
1 - Cover + strainer removed

There is no pollution on the strainer or on the outer surfaces of the gear after removing the cover.



2 - Gear removed

Brown gummy deposit



Brown sticky deposit

Caution: SUNTEC does not recommend the disassembly of the gear, which could result in a modification of the internal clearances and thus no longer guarantee the correct functioning of the pump. It is possible to circulate "clean" fuel in the pump to dissolve these deposits. Therefore, SUNTEC recommends users of its products to be very vigilant about the quality of the fuel used and its storage time. SUNTEC recommends the use of a high quality fuel oil and a fuel quality check after each extended shutdown period.